



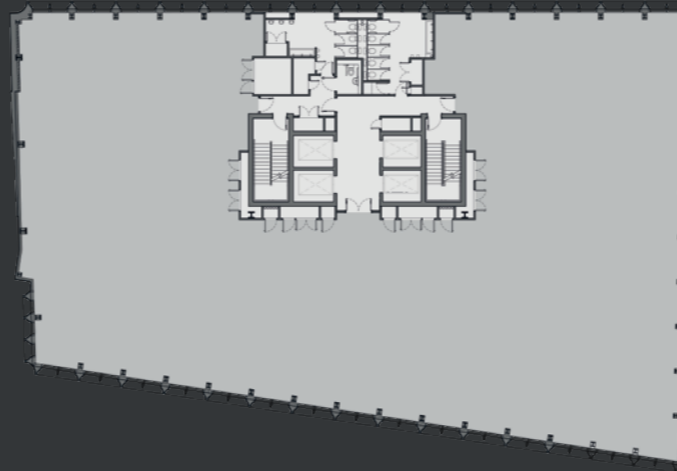
ONETWOFIVE

DEANSGATE | MANCHESTER

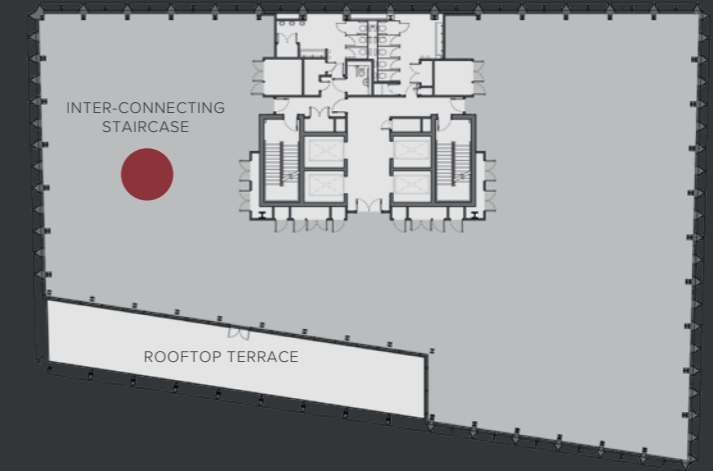
GROUND FLOOR PLAN



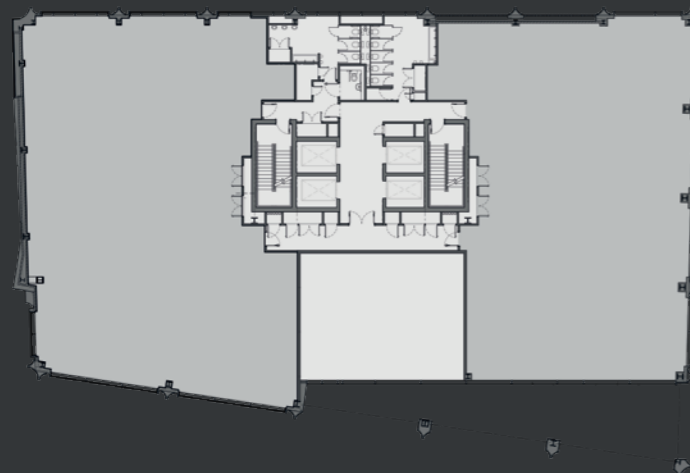
SECOND TO SEVENTH FLOOR PLAN



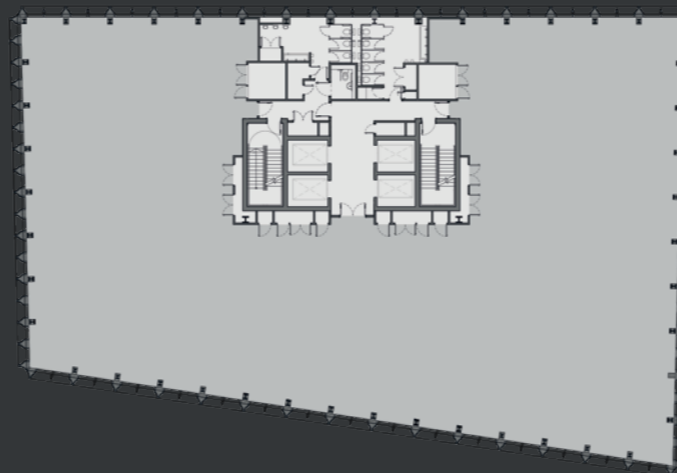
TENTH TO ELEVENTH FLOOR PLAN



FIRST FLOOR PLAN



EIGHT TO NINTH FLOOR PLAN



FLOOR PLAN SIZES

| | Sq ft | Sq m |
|------------------------|----------------|---------------|
| Eleventh Floor | 10,109 | 939 |
| Tenth Floor | 10,109 | 939 |
| Ninth Floor | 11,530 | 1,071 |
| Eighth Floor | 11,530 | 1,071 |
| Seventh Floor | 11,590 | 1,077 |
| Sixth Floor | 11,590 | 1,077 |
| Fifth Floor | 11,590 | 1,077 |
| Fourth Floor | 11,590 | 1,077 |
| Third Floor | 11,590 | 1,077 |
| Second Floor | 11,590 | 1,077 |
| First Floor | 4,748 | 441 |
| Ground Floor Reception | 1,528 | 142 |
| Ground Floor Retail | 7,093 | 659 |
| TOTAL | 126,187 | 11,724 |